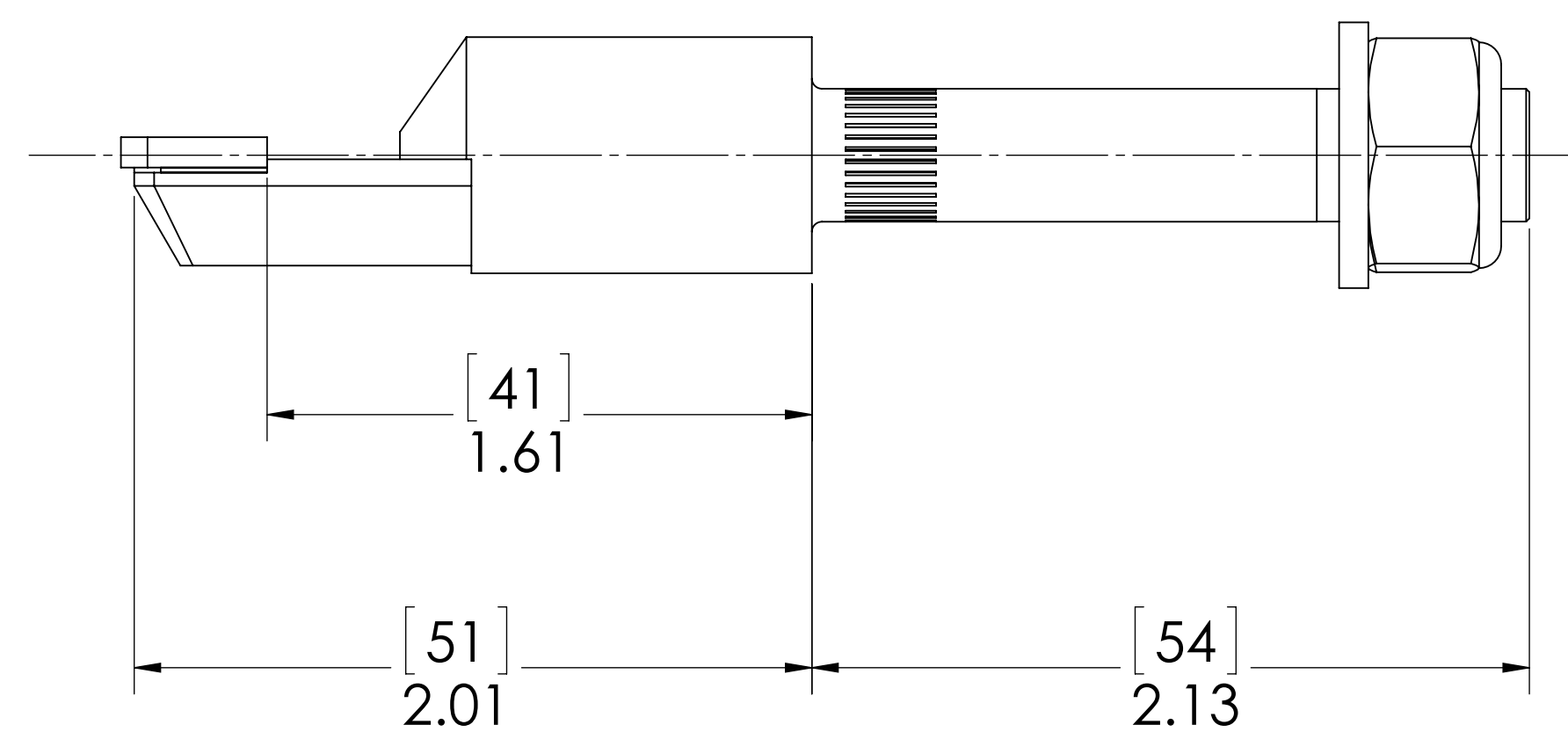
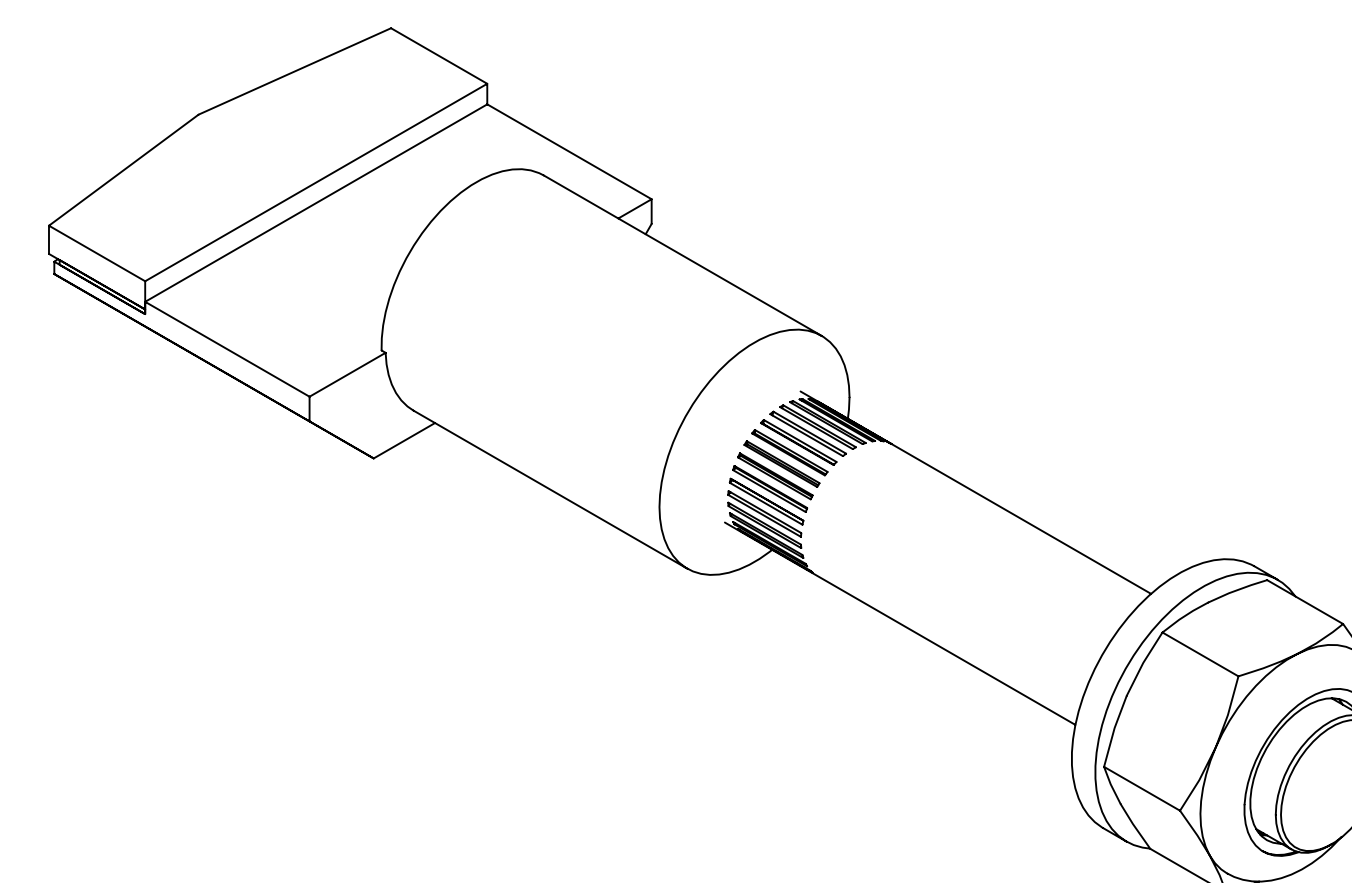
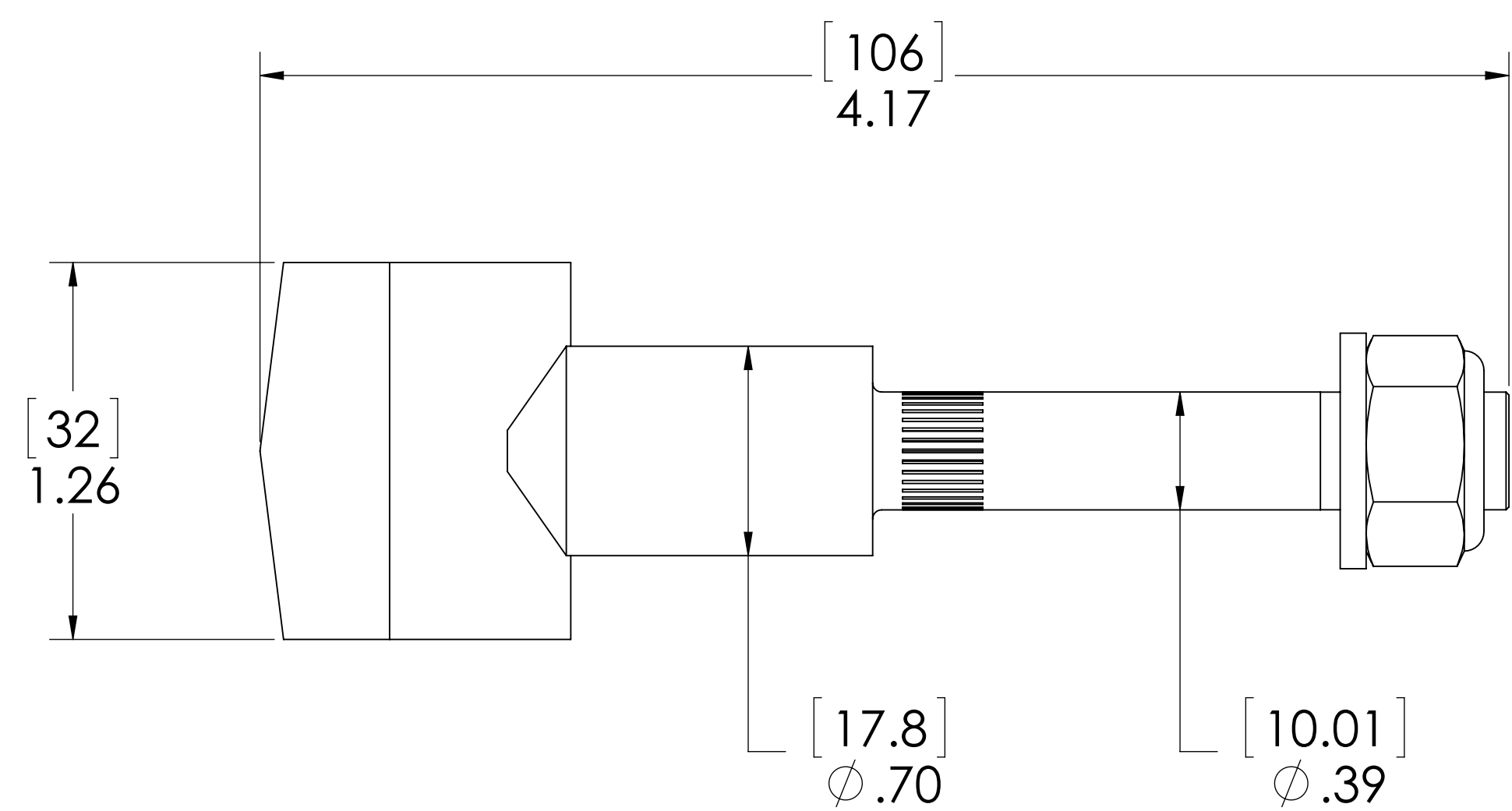


IMF PART NO.	1905A0188
PALMER PART NO.	700000900C
DESCRIPTION	BLADE ASSEMBLY T36-2



NOTE: UNITS IN [MM] INCHES

REV		ECN	DATE	DIMENSIONS ARE IN INCHES UNLESS OTHERWISE SPECIFIED:		DRAWN	NAME	DATE	PALMER 18 BECHTLE AVE SPRINGFIELD, OH 45504 U.S.A. (937) 523-4339 MANUFACTURING & SUPPLY, INC. (800) 457-5456	
				TOLERANCES: FRACTIONAL ±1/16 ANGULAR: MACH ±1 BEND ±1 ONE PLACE DECIMAL ±.150 TWO PLACE DECIMAL ±.030 THREE PLACE DECIMAL ±.005		APPROVED	RELJ	8/16/2016	TITLE BLADE ASSEMBLY T36-2	
				MATERIAL		NOTE		CUSTOMER		SIZE DWG. NO.
				FINISH		PART NO.		021036		D 700000900C
				WEIGHT						REV 0
										SCALE: 2:1 DO NOT SCALE
										SHT 1 OF 1