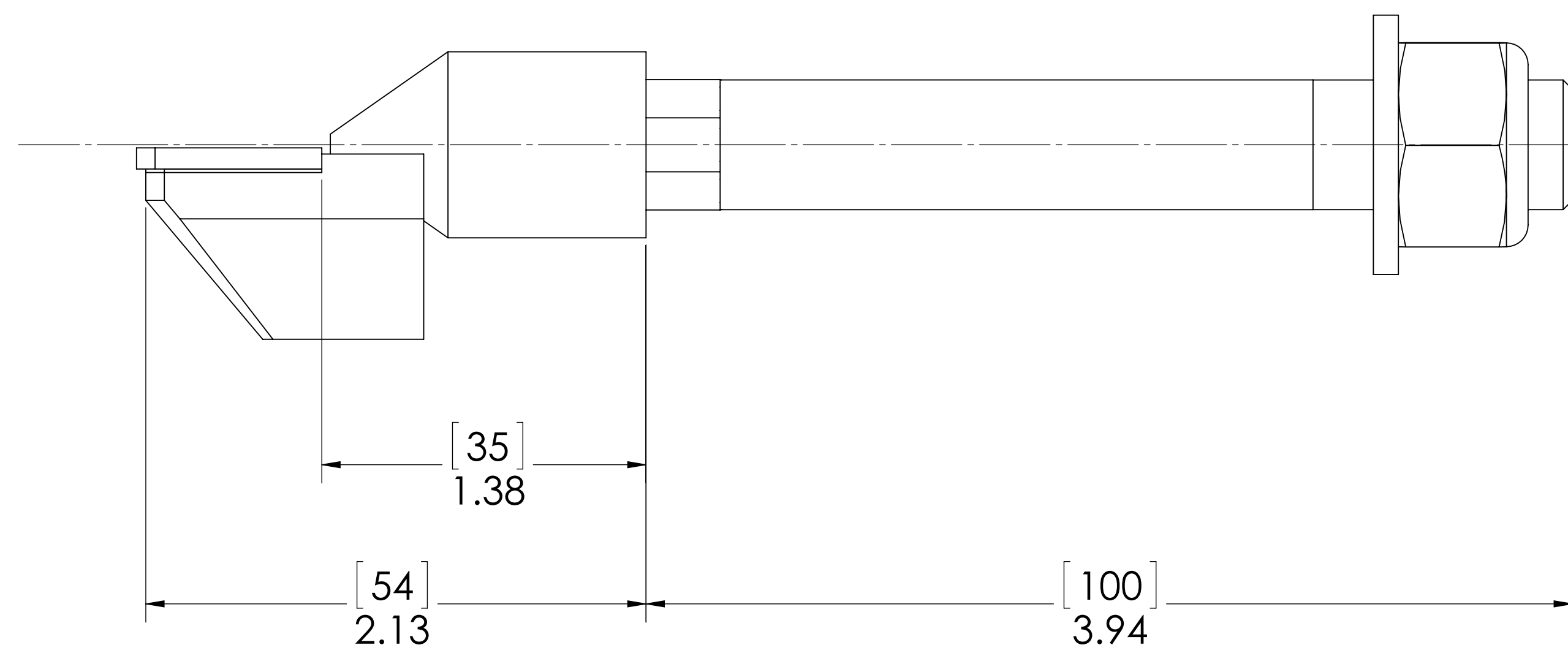
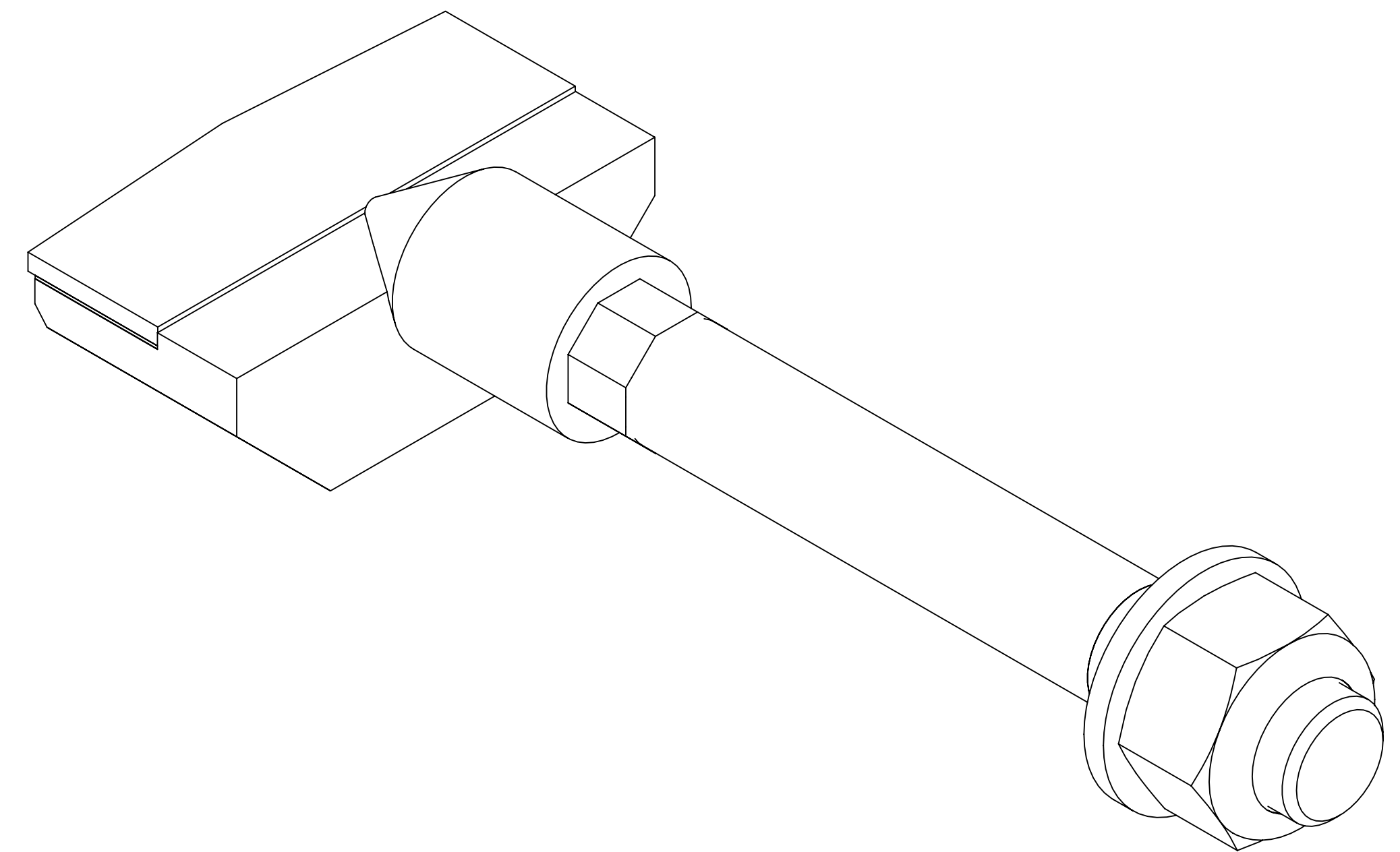
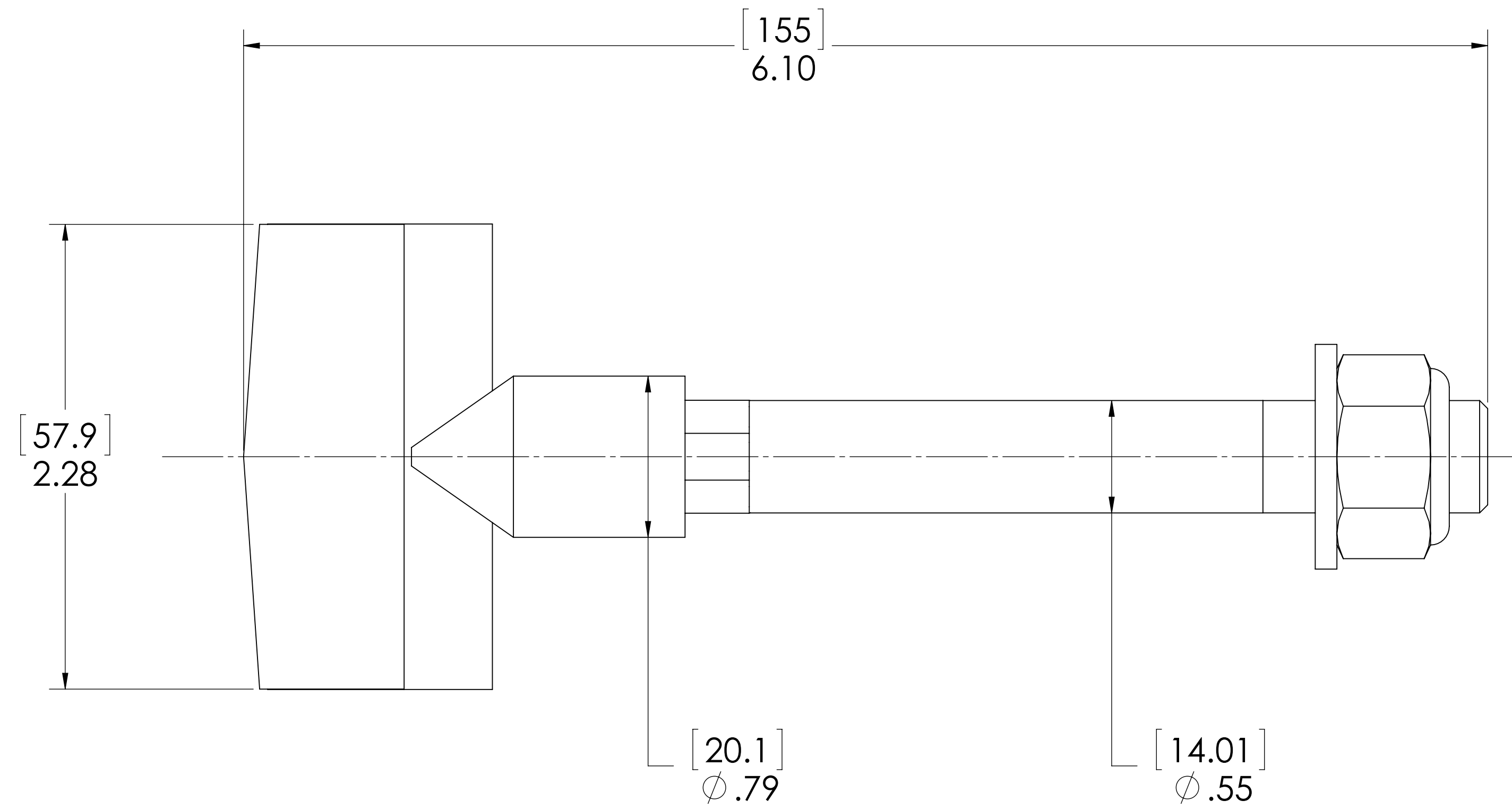


IMF PART NO.	1901A0145A4FC
PALMER PART NO.	700000900E
DESCRIPTION	BLADE ASSEMBLY T36/6



NOTE: UNITS IN [MM] INCHES

REV		ECN	DATE	DIMENSIONS ARE IN INCHES		DRAWN		NAME	DATE
				UNLESS OTHERWISE SPECIFIED:		APPROVED		RELJ	8/13/2016
				TOLERANCES:		NOTE			
				FRACTIONAL: ±1/16		MATERIAL		CUSTOMER	
				ANGULAR: MACH ±1 BEND ±1		FINISH			
				ONE PLACE DECIMAL ±.150		WEIGHT		PART NO.	
				TWO PLACE DECIMAL ±.030				021029	
				THREE PLACE DECIMAL ±.005					
<p>PROPRIETARY AND CONFIDENTIAL - THE INFORMATION CONTAINED IN THIS DRAWING IS THE SOLE PROPERTY OF PALMER MANUFACTURING. ANY REPRODUCTION IN PART OR AS A WHOLE WITHOUT THE WRITTEN PERMISSION OF PALMER MANUFACTURING IS STRICTLY PROHIBITED.</p>									
								<p>PALMER 18 BECHTLE AVE SPRINGFIELD, OH 45504 U.S.A. (937) 523-4339 MANUFACTURING & SUPPLY, INC. (800) 457-5456</p>	
TITLE									
BLADE ASSEMBLY T36/6									
SIZE		DWG. NO.		REV		SCALE:			
D		700000900E		0		2:1 DO NOT SCALE		SHT 1 OF 1	